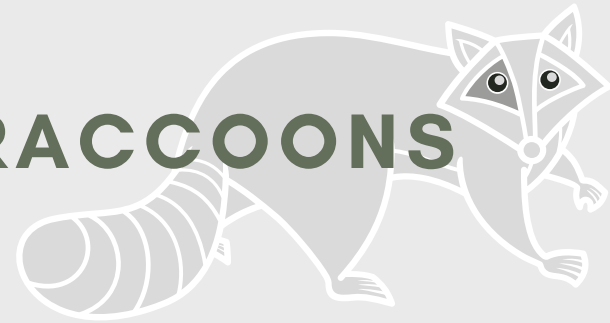


Urban Raccoon (*Procyon lotor*) Movement and Behavior

Stella Uiterwaal, Megan O' Shea, Sara Parikh, Stephen Blake, Sharon Deem, Stan Braude, Jamie Palmer



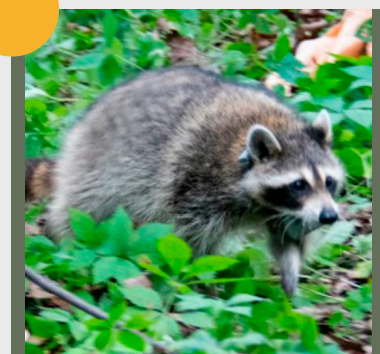
MEET THE RACCOONS



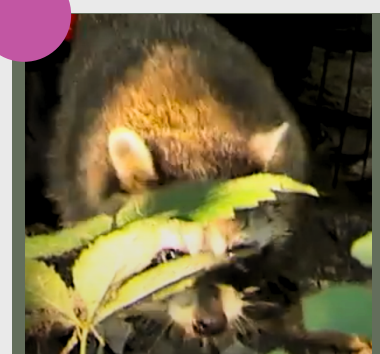
THEIR MANY JOURNEYS IN AND OUT OF FOREST PARK



FRANKIE



JOE



MELISSA

FUN FACTS !

- Frankie "likes to golf."
- Joe frequently crosses Highway 64.
- Melissa uses a culvert to cross Skinker Blvd.
- All 3 like to grab a bite at the picnic pavilions.

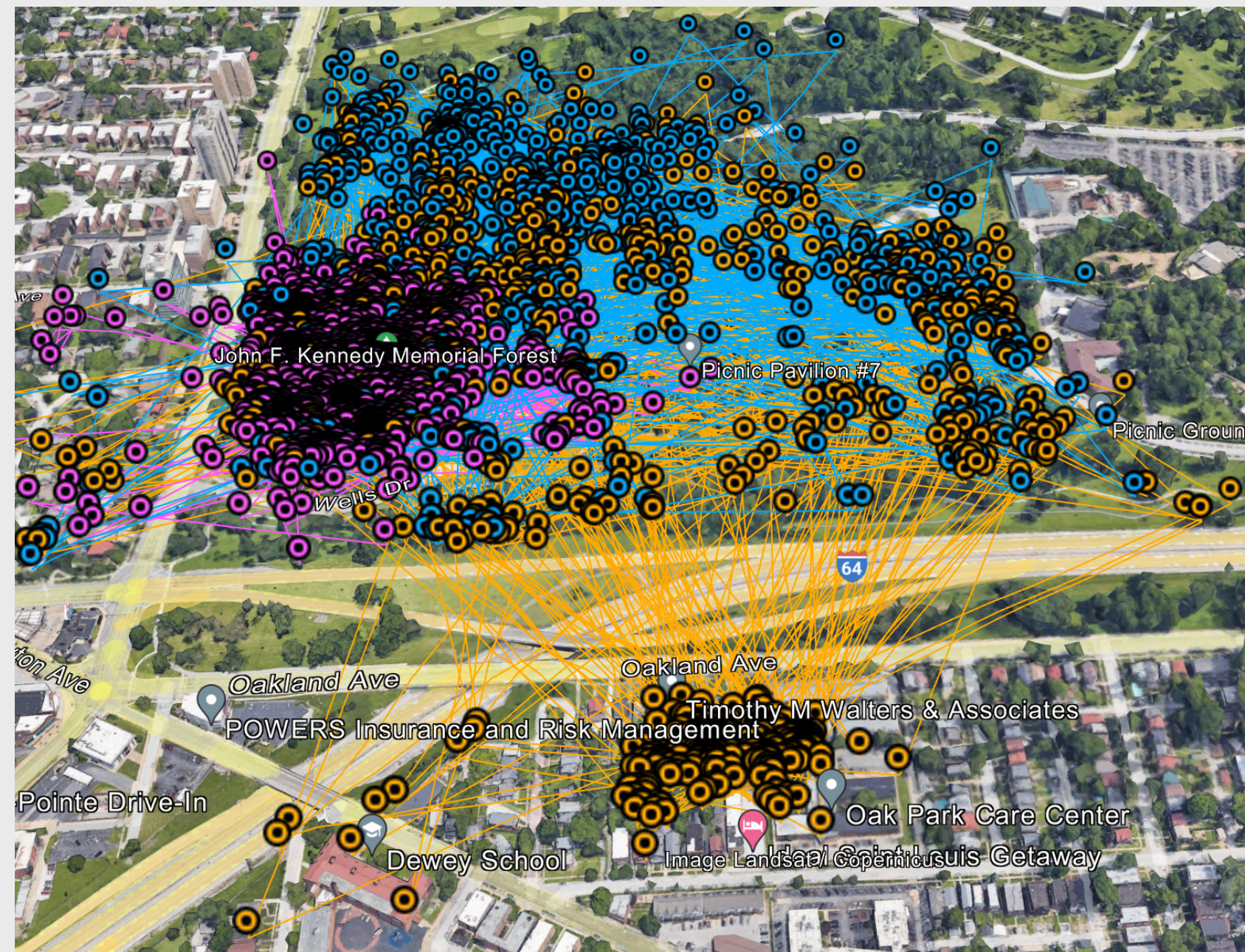


Figure 2: Raccoon activity radio pulse points in Forest Park

RACCOONS AROUND THE CLOCK

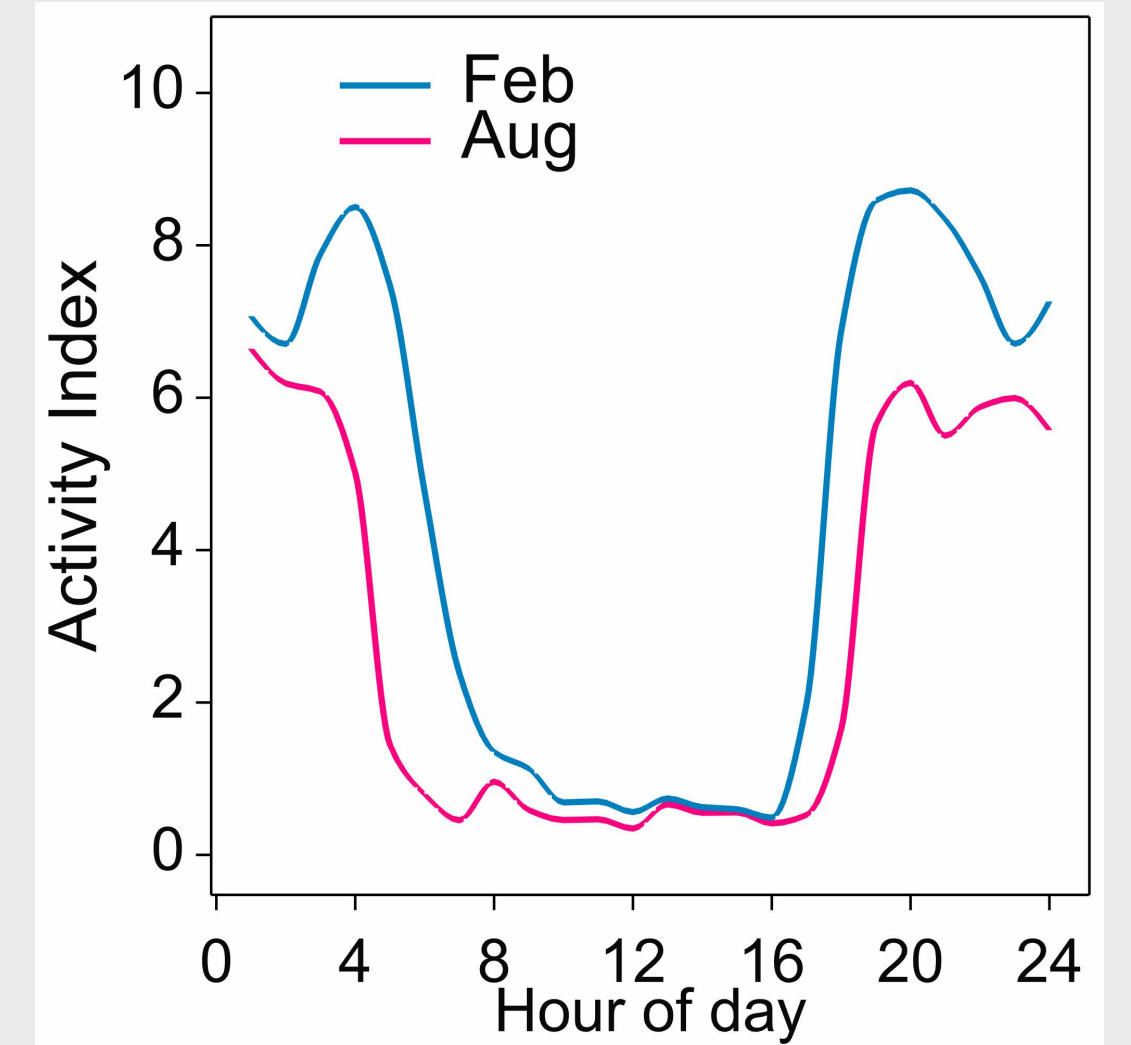


Figure 4: This figure displays an ODBA, overall dynamic body acceleration, which is an indicator of activity by the hour. This ODBA contains an activity index every 2 hours during February and August. We hypothesize that higher activity in the winter is due to the lack of food sources within the park, requiring more travel from the raccoons.

HOW FAR DO THEY WALK ?

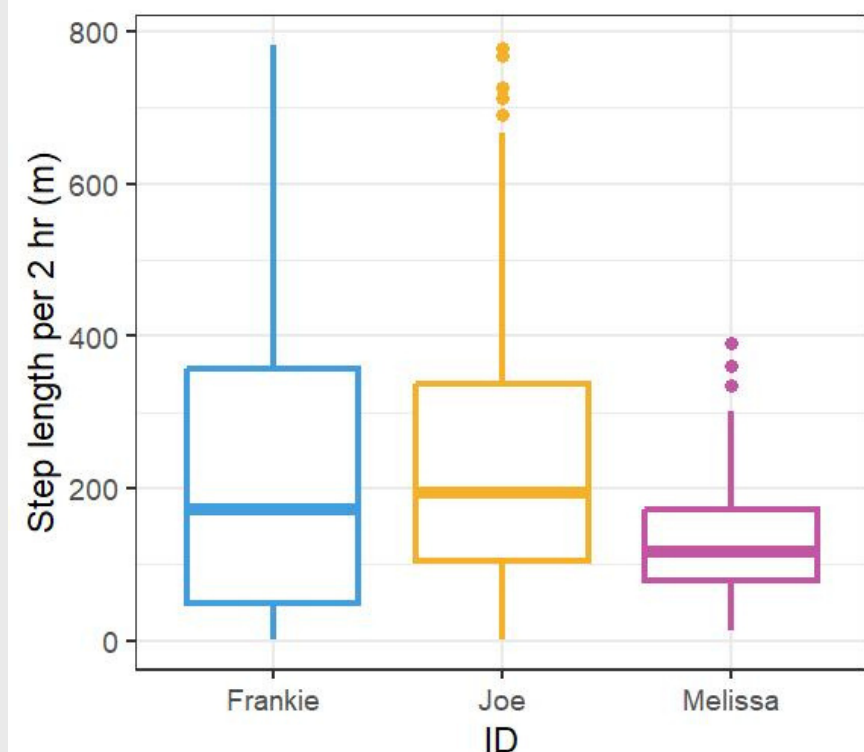


Figure 1: Step length is the straight-line distance traveled in a certain amount of time. This figure displays how far each raccoon travels every 2 hours.



Figure 3: The three raccoons live in roughly the same parts of Forest Park, but use different amounts of space. Frankie occupies the area of about **100 football fields!**

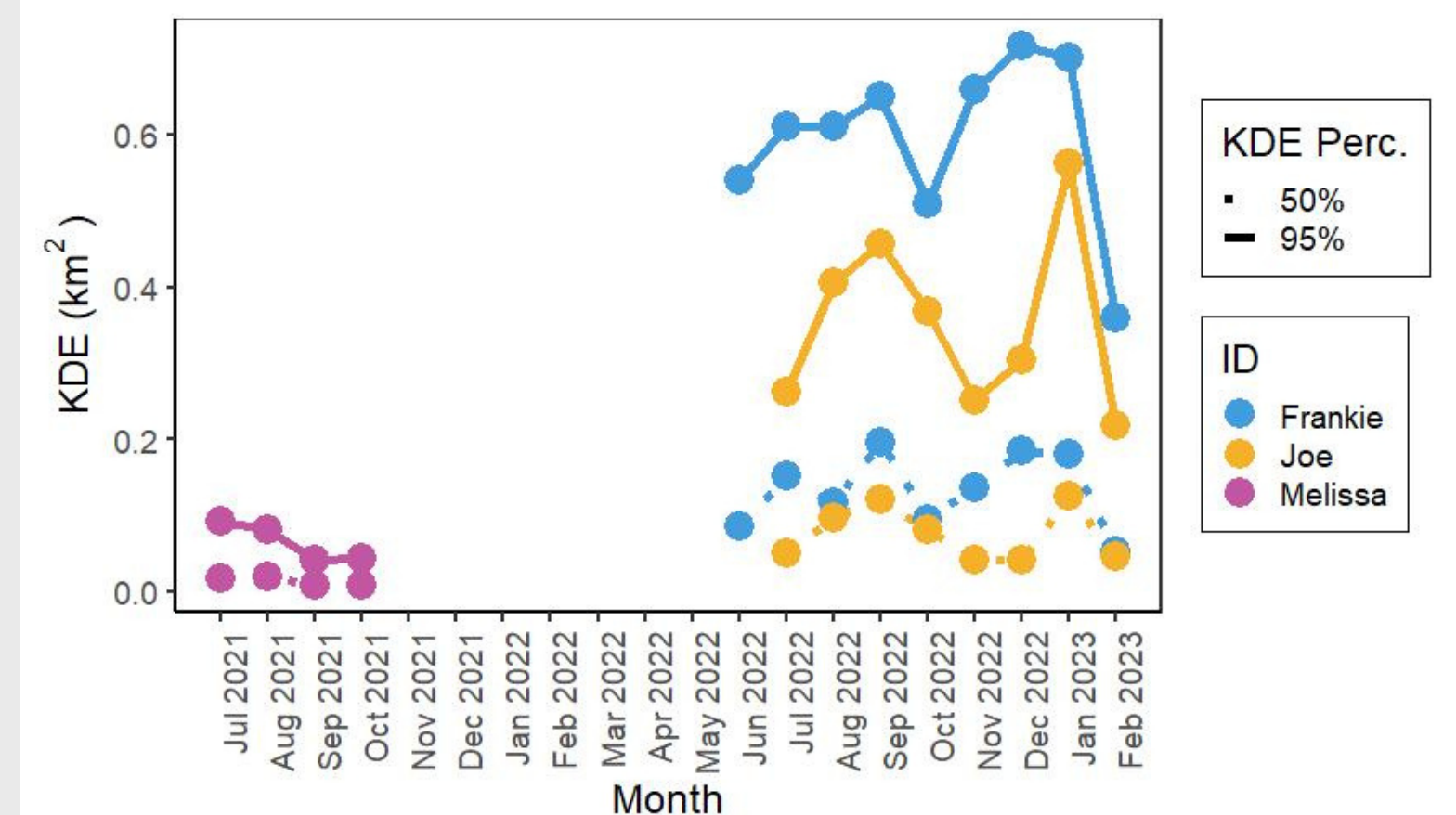


Figure 5: Kernel density estimates (KDE) calculate the area of an animal's home range based on the distribution and concentration of the GPS locations of the animal. Here we can see that the home ranges of the males are much larger than the home range of Melissa.